

# Research In Care Homes

## **RICH Voices**

Patient and Public Involvement in ENRICH Scotland

**Rosie Ashworth, Anna Crawford, Kirsty Hynes and Keshara Staff**





# Symbiotic Relationships

Usually refers to how species work together for the ultimate benefit of both.

1. Clownfish



2. Pets



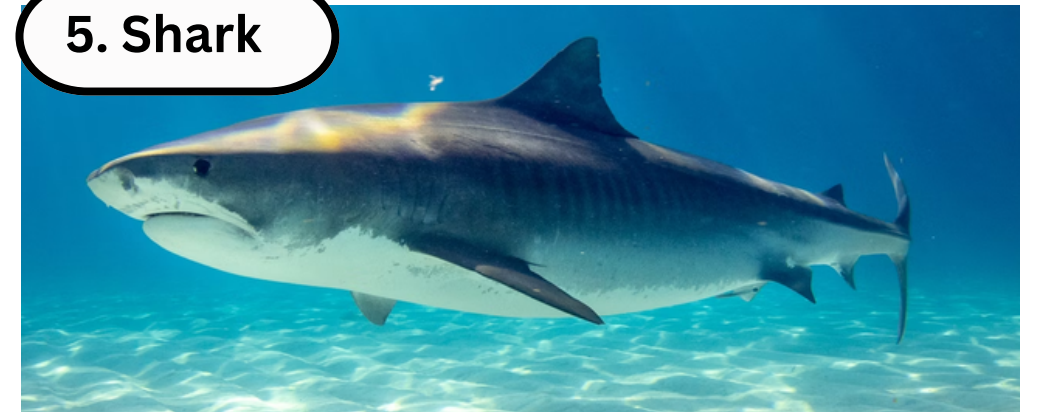
3. Ostrich



4. Mongoose



5. Shark



6. Zebra



9. Warthog



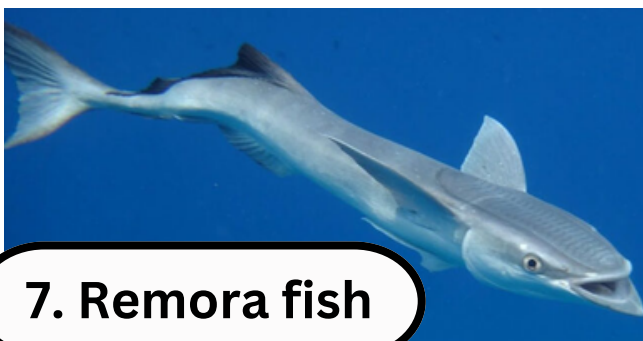
10. Bee



11. Anemone



7. Remora fish



8. Flower



12. Human





# RICH Voices

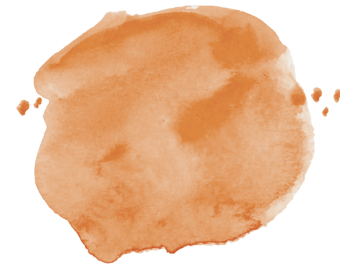


- Research In Care Homes (RICH) Voices focuses on people living and working in care homes
- Core team (including people with lived experience) reviews 'researcher input requests' for PPI in care home research
- Our Clinical Studies Officers work with local care homes to them, to support in-person patient and public involvement activities

**SIGN UP**



# Achievements



Worked with Raith Manor Care Home to create a film about research participation



Recorded a podcast about research in care homes- in edit



Designed and developed an accessible research platform based on input from care home staff



Working with researchers to improve lay summaries of their work, and have these available on the updated website/platform



WATCH VIDEO







# Accessible Research

Add in screenshots and lay summary QR code







# Things to think about

*Moving forward with R7CH Voices*



**Building  
Relationships**



**Missing  
voices**



**Barriers to  
change**



**Time &  
Resources**





**STAFF**



# **RICH Voices**

## **Workshop Activity**

**What is special about your care homes?**

What should we know about your care home so that we can suggest activities that will interest you most?

**What would you like to know more about?**

What would be an important area to see research on in the future?

**Have you taken part in any (research) studies before?**

Tell us about your experience so, we know who has been involved before, things we could do better.







**RESIDENT**



**RICH Voices**  
**Workshop Activity**

**What is special about your care homes?**

What activities or opportunities interest you most?

**What would you like to know more about?**

What would be an important area to see research on in the future?

**Have you taken part in any (research) studies before?**

Tell us about your experience so, we know who has been involved before, things we could do better.





# Keshara Staff



Care Assistant/ Activities Co-ordinator



Westerlands Care Home, Stirling

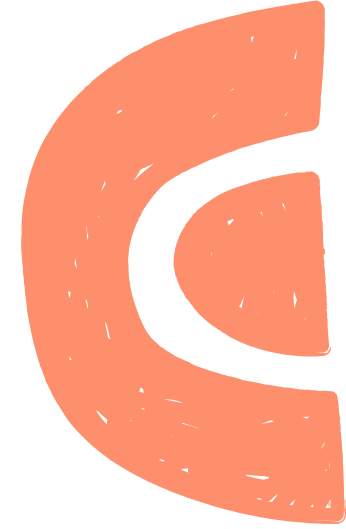
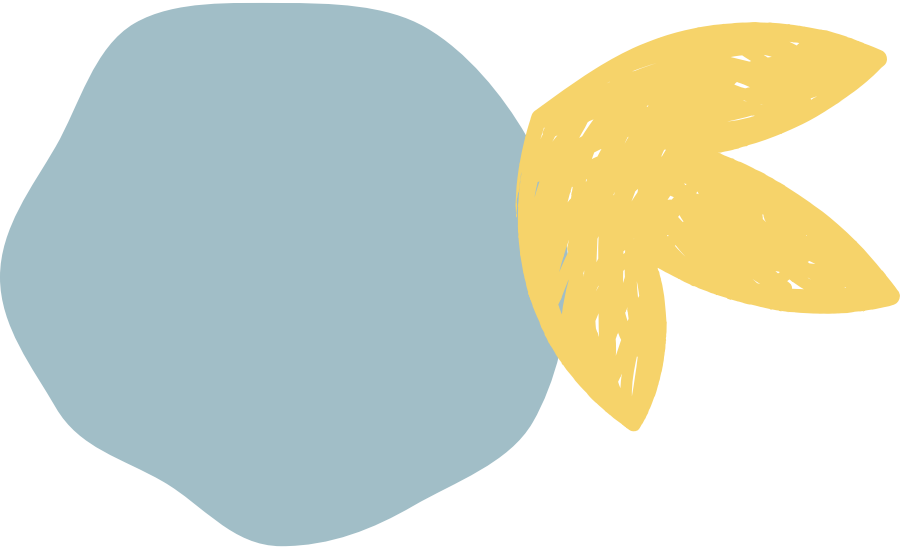


Work experience in community care settings as well as residential care settings.



Interested in research and research-related activities





# **RICH Voices**

## **Workshop Activity**

**Are we asking the right questions?**

**Should we be asking anything else to help us get to know your care home?**

**Is there anything else we could do to support participation?**







**IF YOU WOULD LIKE TO FIND OUT  
MORE, GET IN TOUCH ON:**

**EMAIL: TAY.PPIPARTNERS@NHS.SCOT**

**@ENRICHSCOTLAND**

